

[porib]

pharmacoeconomics & outcomes research iberia

Leaders in Healthcare Evaluation

Pharmacoeconomics &
Outcomes Research Iberia



Company

Pharmacoeconomics & Outcomes Research Iberia (PORIB) is a Health Evaluation, Market Access, and Real-World Evidence (RWE)/ Health Outcomes Research consultancy, founded in 2004, which provides its services to the Pharmaceutical and Health Technology Industry, Health Administrations, Universities, Patient Associations and Health Professionals



PORIB aims to demonstrate the value, therapeutic utility and efficiency of health interventions to help decision-making and guarantee patient's access.

In PORIB, we believe that active involvement and engagement in projects are crucial to achieve results based on quality and the excellence. To accomplish this, we have a multidisciplinary team of highly skilled and talented professionals, enabling us to offer our CLIENTS the most efficient response.

Values

PORIB's leadership is based on its identity

- **Quality, excellence and innovation** in the services we provide
- **Satisfaction and continuous improvement** to ensure the fulfillment of our client's objectives.
- Absolute respect for the **confidential** information provided by our clients.
- **Qualification, experience and expertise** of our human resources.
- **Teamwork in coordination** with our clients and with multidisciplinary teams: clinicians, pharmacists, nurses, epidemiologists, statisticians, economists, healthcare payers, psychologists, sociologists and documentalists.



PORIB provides an overview of health interventions value in the following areas:

Services

- Health Economics
- Pricing and Reimbursement
- Market Access
- Real-World Evidence
- Scientific Communication
- Healthcare Management
- Advisory Boards
- Biostatistics
- Training

Health Economics



- Studies of **healthcare resource utilization** and **cost analysis**.
- **Cost-minimization**, **cost-effectiveness**, **cost-utility** and **cost-benefit analysis**.
- **Cost-consequence** analysis.
- **Budget impact** analysis.
- **Modeling** studies: decision analysis, Markov models and discrete event simulations, microsimulation and models with individual patient data:
 - De novo design models.
 - Adaptation of models.

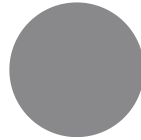
Pricing and Reimbursement

- **Value dossiers** and **clinical-economic evaluation** reports.
- Carrying out studies to establish price **sensitivity** of medicines for decision makers (stakeholders).
- **Strategic consultancy** services during the P&R **negotiations** with the Ministry of Health.
- Financial based or health outcomes based **agreements**.



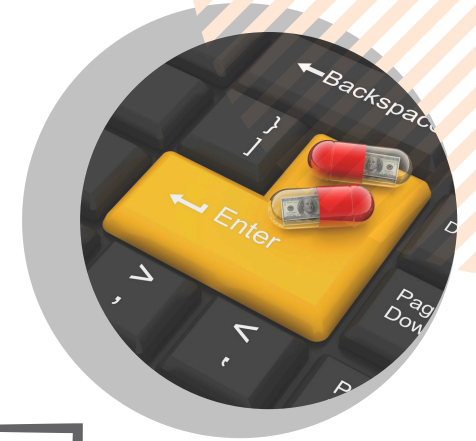
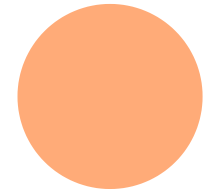
Market Access

- Value dossiers and clinical health economics evaluation reports.
- Communication strategies and market access plans.
- Interactive tools and models.
- Stakeholder mapping and landscape analysis studies.
- Risk-sharing and patient access programs.
- Multi-criteria decision analysis (MCDA).
- Healthcare benchmarking programs.



- Effectiveness studies
 - Observational studies.
 - Pragmatic and naturalistic studies.
 - Studies incorporating economic variables (health resource utilization).
- Epidemiological studies
 - Descriptive or analytical, cross-sectional or longitudinal, retrospective or prospective, observational or experimental studies.
 - Studies on use, prescription or treatment patterns.
- Patient Reported Outcomes measures, (PROm) y Patient-Reported Experience measures, (PREm).
 - Health-Related Quality of Life (HRQL).
 - Discrete choice experiments (DCE) and Conjoint análisis (CA).
 - Satisfaction and expectations with treatment.
 - Level of disability.
- Compliance studies
 - Adherence and persistence studies.
 - Support and health educational programs for patient.

Real-World Evidence



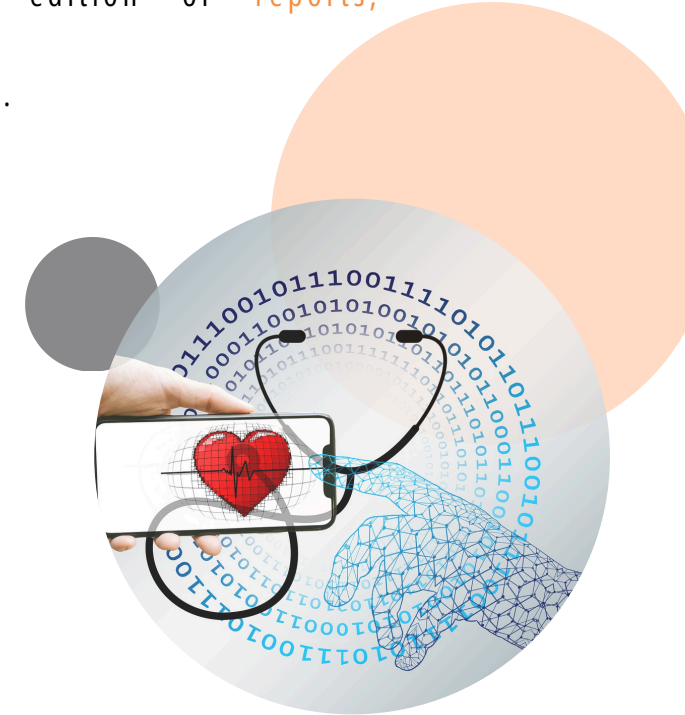
Scientific Communication



- Literature review (exhaustive or systematic).
- Meta-analysis.
- Matching-adjusted indirect comparisons (MAIC), mixed-treatment comparisons (MTC) y network meta-analysis (NMA).
- Planning, coordination and adaptation of clinical practice guidelines, consensus or recommendations, based on published scientific evidence.
- Development and adaptation of articles.
- Development of abstracts, oral communications and posters.
- Development, coordination and edition of reports, monographs and books.
- Critical review of published articles.

Healthcare Management

- Value-based healthcare (VBHC) management through the evaluation and review of healthcare procedures to obtain the best health outcomes.
- Lean healthcare management systems with the aim of improving patient satisfaction and excellence in the service provided by healthcare professionals.
- Patient journey.
- Digital transformation of the healthcare sector, based on the use of information and communications technologies in all healthcare settings.



Advisory Boards

PORIB carries out **Advisory Boards**, deliberative processes, or face-to-face and virtual meetings with the aim of:

- Understanding the current **unmet needs**, encourage debate concerning **strategic aspects** related to a health intervention and reach consensus among representatives of the groups involved in a decision.
- Establishing price **sensitivity** of medicines for decision makers (stakeholders) to the **price** of medicines.
- Evaluating the suitability and convenience as well as validate the design and **data of economic evaluation models**.

- **Face-to-face and online programs**.
- **Practical training adapted to the needs** of different work teams (medical-scientific departments, market access, business units).
- **Tailored training programs for healthcare professionals** (clinicians, pharmacists, nurses) covering pathologies or products.
- **Accreditation** of training programs.

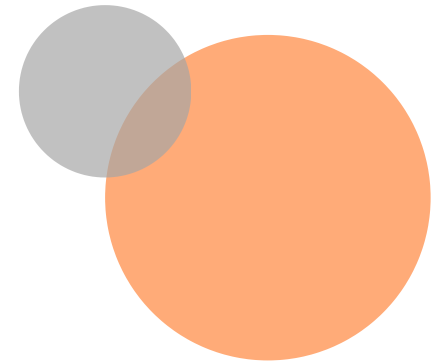
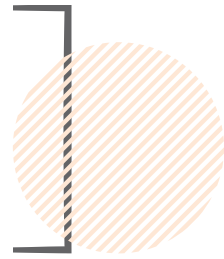
Training

Biostatistics

- **Experimental designs**: calculation of sample sizes, development of protocols and planning of the statistical methodology of research studies.
- Clinical or economic databases.
- **Statistical analysis and reports** for clinical, epidemiological, and socio-health services research.
- **Interpretation and effective communication of results**.



Clients



3M	Celgene	Isdin	Roche
Abbott	Cellerix	Janssen	Rovi
Abbvie	Chiesi	Johnson & Johnson	Sandoz
Adamed	Clovis Oncolgy	Kite	Sanofi Pasteur MSD
Advanced Acelerator	Covidien	Leo Pharma	Sanofi
Applications	CSL Behring	Leti	Santen Pharmaceutical
Allergan	Daiichi Sankyo	Life Length	Schering AG
Alnylam	Edwards Lifesciences	Lilly	Schering-Plough
Alter	Eisai Farmacéutica	Lundbeck	Servier
Amgen	Esteve Teijin	Luye Pharma	Shire
Astellas	Esteve	Mallinckrodt	Sobi
AstraZeneca	Ferrer	Medtronic	Stada
Bausch & Lomb	Galapagos	Merck Sharp & Dohme	Stallergenes
Baxalta	Galderma	MSD	Takeda
Baxter	General Electric	Merz	Teva
Bayer	Genzyme	Mundipharma	UCB Pharma
Becton Dickinson	Gilead Sciences	Novartis	Urigo Medical
BioDan Skinmed	Glaxo SmithKline	Novo Nordisk	Uriach
Biogen	Grünenthal	Otsuka	ViiV Healthcare
Bioprojet Pharma	Hologic	Pfizer	Vivia
Boehringer-Ingelheim	Horizon Therapeutics	PharmaMar	Biotech
Boston Scientific	Incyte	Praxis Pharmaceutical	Wyeth
Bristol-Myers Squibb	Indivior	PTC Therapeutics	Zambon
Camurus	Insulclock	Reckitt Benckiser	
Casen Recordati	Ipsen	Recordati	



Therapeutic Areas

Anesthesiology
Autoimmune Diseases
Cardiovascular
Dermatology
Digestive
Endocrinology
Gynecology
Hematology-Oncohematology

Hepatology
HIV-AIDS
Infectious Diseases
Nephrology
Neurology
Nutrition
Ophthalmology
Oncology

Pneumology
Psychiatry and Mental Health
Rare Diseases
Rheumatology
Surgery
Stroke
Urology
Vaccination



www.porib.com